



## WPG Cycle Spin Studios

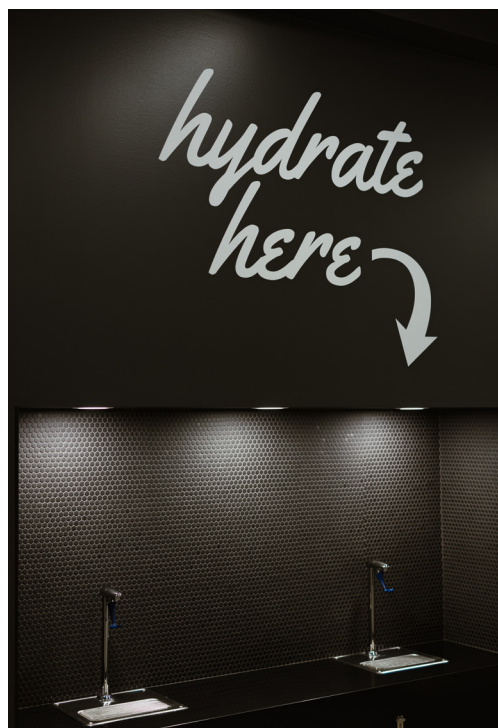
WPG Cycle Ltd. was looking to establish a new and positive presence in Winnipeg's burgeoning spin fitness community. Ernst Hansch Construction Ltd. led the project to help WPG Cycle identify and evaluate suitable locations, then transform that space into a cutting edge spin cycling studio with high end facilities and spa-like amenities.

Ernst Hansch Construction Ltd. was heavily involved in project planning from the start, working closely with WPG Cycle as a true partner in business planning. Following a thorough feasibility study process, Ernst Hansch Construction Ltd.

inspected and evaluated multiple locations in order to identify spaces that WPG Cycle could call home.

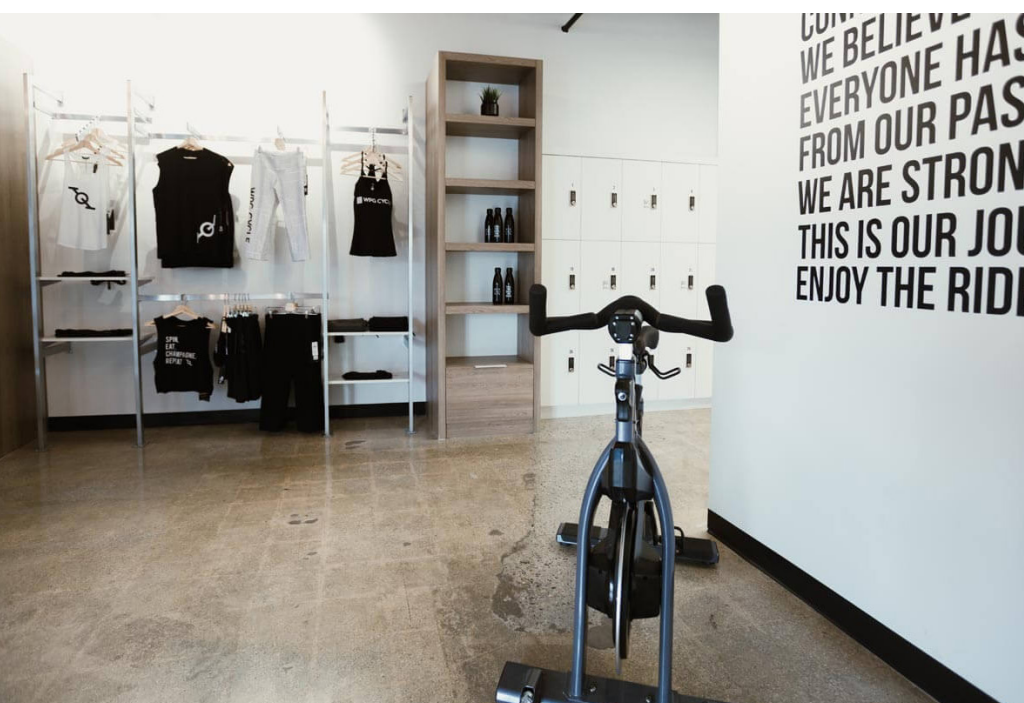
To ensure WPG Cycle's functional and aesthetic needs were understood and met, Ernst Hansch Construction Ltd. and its design team, Fenwick & Company Interior Design and Heather Wallis Interior Design, collaborated with the client to provide a highly specialized indoor spin cycling fitness studio. By working closely with WPG Cycle from start to finish, Ernst Hansch Construction Ltd. was able to provide value engineering to reduce project costs and improve the space's overall function and performance.

<b>Client</b>	WPG Cycle
<b>Location</b>	Osborne Avenue & Narin Avenue, Winnipeg, Manitoba, Canada
<b>Size</b>	3,200 / 3,700 square feet
<b>Completed</b>	2016 / 2018
<b>Project Type</b>	Sports & Entertainment
<b>Services</b>	Design-Build



The results are metropolitan spin cycling studios that are strongly branded inside and out for a truly unique fitness experience. WPG Cycle patrons enjoy a soundproof spin studio with club-like coordinated LED lights, high-intensity sound system and state-of-the-art facilities. Changing rooms and public areas include polished concrete floors, tile finishes and glazing to create a space that feels invigorating, modern and luxurious.





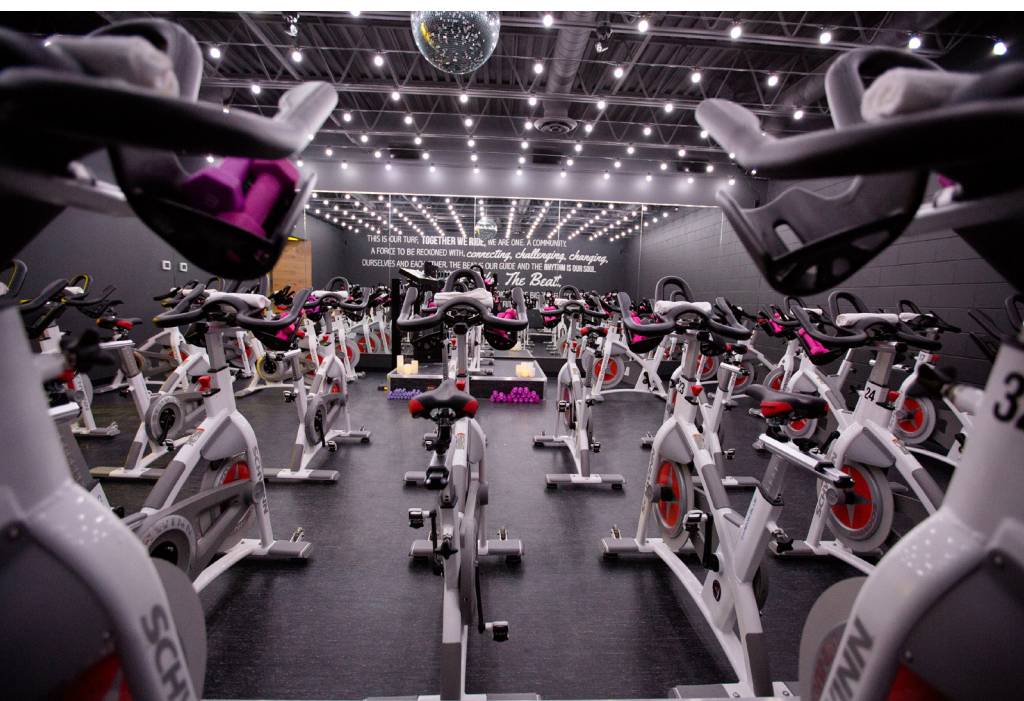




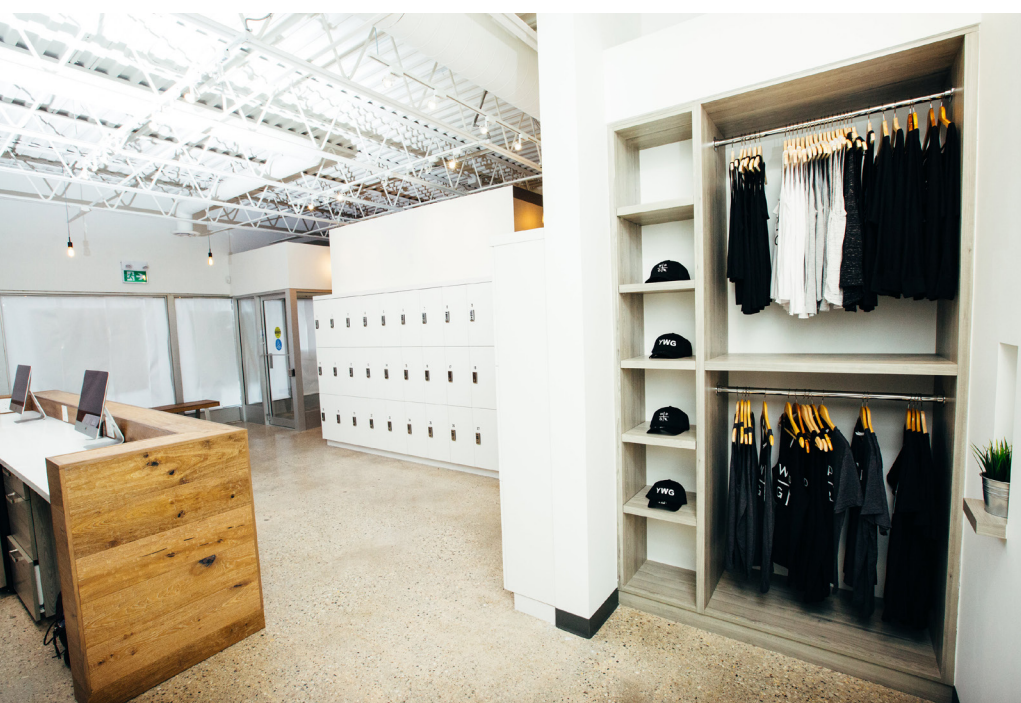














*hydrate  
here*





